



## User guide



Download  
our app



Switch on and  
Bluetooth pair

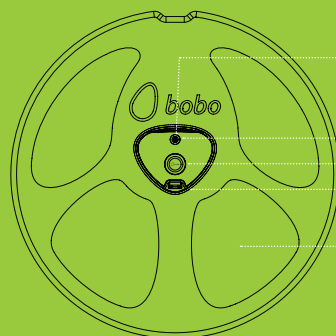


Get  
training

[www.bobo-balance.shop](http://www.bobo-balance.shop)

BoBo Home 2.0 International edition October 2021

## What's in the box?

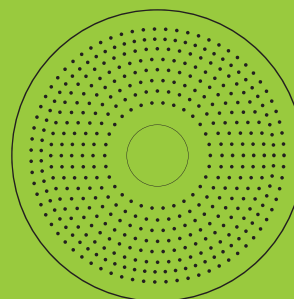


BoBo



Motion sensor

- Power led
- Power button
- Plastic cover
- Training board



Balance cushion



Phone/Tablet Stand



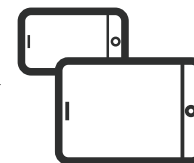
Pump

## Let's begin!

1

### Download our app

Download **bobo home** app to your phone or tablet



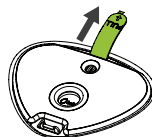
2

**Launch**Launch the **bobohome** app.

3

**Pull out**

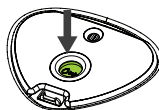
Remove the plastic foil (only the first time).



4

**Power on**

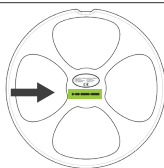
A short press on the power button will turn on the BoBo.



5

**Activate your BoBo**

Follow the steps in the app to activate your product. You will find your product key on the back of your BoBo.

**Operation status light****Power on** – blue & orange light**Searching mode** – blue blinks**Pairing successful** – green blinks**To power off the BoBo**, press and hold the power button. Wait for 2 red blinks.**Pairing is automatic!**

Enable Bluetooth on your smartphone or tablet. Do not pair the BoBo with your smart device. If you accidentally did, please disconnect the BoBo from the Bluetooth connected devices on your smart device.

**In order to conserve battery, BoBo shuts off automatically in the following situations:**

- When it is not paired for 2 minutes.
- When not used for 10 minutes.
- When Bluetooth is disconnected.
- When the app is closed.

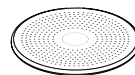
***Now you're ready to play!***

# 5

## Stand on the BoBo

I

Place the balance cushion on a flat leveled floor, clear the exercise area from any foreign objects.



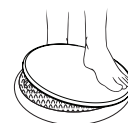
II

Place the BoBo at the center of the balance cushion and make sure it's leveled.



III

Place one foot on one side of the BoBo and apply weight. The board will tip toward that foot until the edge of the board rests on the ground. Shift your weight entirely onto that leg, holding onto something sturdy for support if necessary.



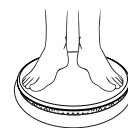
IV

Place your free foot on the opposite side of the board, an equal distance from the center.



V

Shift your weight back and forth until it's evenly balanced. Just standing on the board like this can be a major challenge at first. Hold onto something sturdy for balance if necessary but wean yourself off the support one finger at a time as your balance improves.

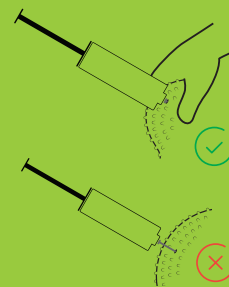


### Adjusting training levels

Use the pump to inflate or deflate the cushion to adjust the training level.

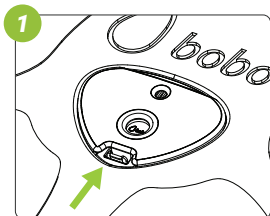
The more you inflate, it's harder to balance on the BoBo.

Insert the needle and push until it is entirely inside. Be careful not to puncture the other side!

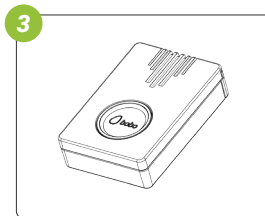
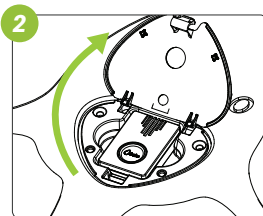


# Replacing the Battery

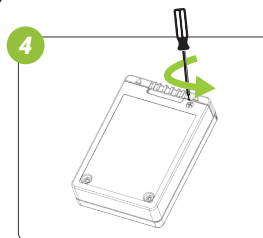
Battery type: CR-2032



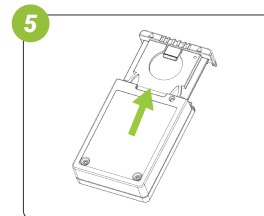
Push the cover snap and open the cover



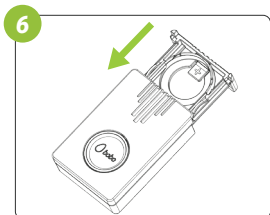
Take out the motion sensor



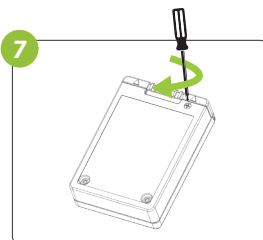
Open the safety screw



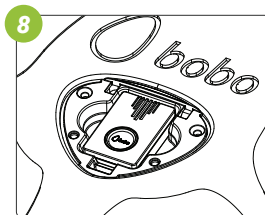
Pull out the battery drawer and safely dispose of the empty battery



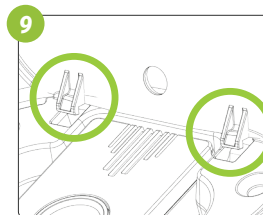
Place the new battery, "+" facing down and close the drawer



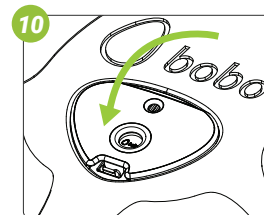
Secure the drawer in place with the safety screw



Place the motion sensor back into the BoBo



Place the cover, make sure both hinges are in their slots



Close the cover and press it down till you hear a click



## WARNING! Do not ingest battery, chemical burn hazard

This product contains a coin/button cell battery. If the coin/button cell battery is swallowed, it can cause severe internal burns in just 2 hours and can lead to death. Keep new and used batteries away from children. If the battery compartment does not close securely, stop using the product and keep it away from children. If you think batteries might have been swallowed or placed inside any part of the body, seek immediate medical attention.



# Troubleshooting

## App does not connect to my BoBo

- Make sure you are using the **bobo home** app (and not other BoBo app).
- Verify BoBo is turned on (blue LED blinks).
- Verify that Bluetooth is enabled on your device.
- Device Bluetooth pairing is automatic. Make sure BoBo is not paired to your smart device. Go to SETTINGS > BLUETOOTH > CONNECTED DEVICES click the BoBo device ID and select "Forget".

## Cannot complete activation process

- Active internet connection is required, make sure your internet connection works.

## BoBo power light is off

- Try to power on the BoBo by a short press on the power button.
- Replace the battery - follow the instructions on the previous page.



# Instructions for use

Please observe the following precautions before each use of your BoBo:

- Prior to each use inspect the balance cushion for nicks, tears, punctures, or other defects that may cause it to fail. Do not use the balance cushion if such defects are found.
- Always use the BoBo and the balance cushion in an open area on a flat, dry, level and stable floor. Do not use on an incline.
- During training you may find it necessary to dismount the BoBo quickly therefore make sure that the area is clear of furniture and other obstacles that might cause harm while using or dismounting the BoBo.
- For initial usage, be sure you have firm support such as a wall, bar or a stable table within arm's reach. If necessary keep using the support to prevent falling during training.
- Inspect and clear the floor surface for objects which could puncture or otherwise damage the balance cushion.
- After placing the BoBo at the center of the balance cushion, be sure that the BoBo is properly balanced on cushion. Do not use the BoBo if it slips from the cushion.
- Train on the BoBo wearing sneakers, sports shoes or barefoot only.
- Do not engage in bouncing or jumping exercises while using the BoBo.
- No more than one person at a time should use the BoBo.
- Avoid stepping or standing on the edges of the BoBo.
- Do not expose the BoBo to liquids or extremes of heat or cold.
- Do not use the BoBo if you are under the influence of alcohol or any other substance that could affect your sense of balance or perception causing you to slip or fall.
- An adult must explain all safety information and usage guidelines to children or other users with mental or cognitive issues. Failure to do so may result in bodily injury and/or damage to the system or other property. Observe children during gameplay for proper and safe use of the BoBo.

## Important safety instructions

- Do not dismantle, disassemble, open, or otherwise alter the BoBo, except for the purpose of changing the battery.
- The BoBo contains a coin lithium battery which can be combustible. Keep away from heat source such as fire, oven, microwave oven, direct sunlight, etc.
- Keep the BoBo dry. Do not use with wet hands or in a wet environment. Moisture can cause electric shock.
- If the battery emits a liquid, stop using the BoBo immediately and contact qualified service.
- Ensure that BoBo usage is in accordance with the manufacturer instructions.
- Do not store the BoBo in a hot or humid environment such as car parked in sunshine, etc.

BO&BO LTD. ASSUMES NO LIABILITY FOR INJURY OR DAMAGES THAT MAY OCCUR WITH THE USE OF THIS PRODUCT.  
THE CONSUMER ASSUMES ALL LIABILITY AND USES THIS PRODUCT AT THEIR OWN RISK.

COPYRIGHT All Rights Reserved BO&BO Ltd. 2020. Manufacturer details: Company: BO&BO Ltd. / O.C ID: 515218261 /  
Address: 11 Ha'avoda st Rosh-Ha'ain, Israel / Phone: +972 35731198. / E.A.R. - Obelis S.A. Boulevard Général\_Wahis 53, B-1030 Brussels, BELGIUM.  
For technical support please write us at: [support@bobo-balance.shop](mailto:support@bobo-balance.shop) / For any other issues, please contact us at: [bobo-balance.shop](mailto:bobo-balance.shop)



ID: SH6MDBT42V

# ATTENTION!

Read before use



Use a support device if required!



Clear the exercise area from any foreign objects



Caution! Slippery when wet!!!



Children must have adult supervision!



Please read the detailed safety instructions on the back of this page!

## Maintenance instructions



Avoid the unit being dropped.



Avoid contact with water.



Do not disassemble or insert foreign objects into the unit.



Do not wipe the surface of the unit with alcohol or abrasives.

