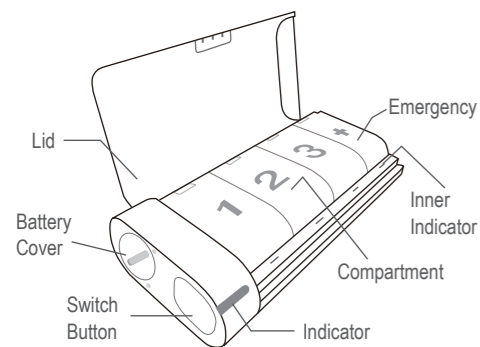


Description

The smart pillbox is a reminder to be used at home and for travelling, for people with long-term or periodic medication needs or for users and caregivers to monitor and understand the medication of the elderly from their medication records on the APP connected with the pillbox through Bluetooth.

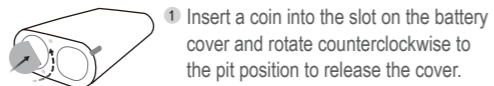


- Power on/off
- Beep on/off
- Sleep mode on/off

Accessories

- Coin Battery..... X1
- User Manual X1

Install Battery



- Slide a coin battery (CR2302) into the battery slot with the positive side up. Make sure the battery is fixed correctly.
- Replace the battery cover and rotate the cover clockwise back to the bump position.

- Automatic power-on:** The pillbox turns on automatically with an audible beep when the battery is correctly installed.

- Low battery:** The indicator flashes red for 10 seconds when the battery is low. Please replace the battery timely.

- The elements of the instructional safeguard shall be as follows:**

- element 1a: not available
- element 2: Do not ingest battery. Chemical Burn Hazard!
- element 3: This product contains a coin/ button battery. If the coin/ button cell battery is swallowed, it can cause severe internal burns in just 2 hours and can lead to death.
- element 4: Keep new and used batteries away from children.

If the battery compartment does not close securely, stop using the product and keep it away from children. If you think batteries might have been swallowed or placed inside any part of the body, seek immediate medical attention.

Sort Medications

Sort your medications directly into each compartment.

Set up schedules for the medications on iChoice APP (Refer to "Set Up Medication Schedule").

- Sorting:**

The + compartment is used for first-aid medicines if you need.

Liquid medicines are not applicable to this box.

- Storage:**

Keep the pillbox at a cool location away from direct sunlight.

It is recommended to store medicines according to their storage requirements.

Pill Reminder

Indicators and audible alarm will remind you when a certain compartment needs to be opened.



Time to take your medicines!

Indicator on the pillbox flashes green and intermittent beep sounds, continuing for 30s.



Which medicine to take?

Indicator of the compartment lights up green when you open the box. It will be off when the box is closed.

- Reminder cycle:**

The pillbox sends 4 pill reminders with intervals of eight minutes. The indicator flashes red for the last reminder.

- ECG measurement reminding:**

The pill box (only PB218) reminds you to measure your ECG by lighting green indicator and at the same time sounding continuous beep for 30 seconds.

Specification

- Product Name : Smart Pillbox
- Product Models : PB118, PB218

PB118 (back view):
No ECG monitor compartment



PB218 (back view): including an extra compartment for ECG monitor (The monitor should be a certified medical device.)



- Weight : 130±10g, including battery
- Dimension : 130mmX33.5mmX62.5mm(±1mm)

- Power Supply : One button battery (CR2032)
- Power Consumption : <10mA

- Working Environment :**

Temperature: 5°C~40°C
Relative Humidity: 15%~93% (Non-condensation)
Atmosphere Pressure: 70kPa~106kPa

Transport/Storage Environment:

Temperature: -25°C~55°C
Relative Humidity: ≤93% (Non-condensation)
Atmosphere Pressure: 70kPa~106kPa

Set Up Medication Schedule

1, Install iChoice APP

- Scan the Q&R code to access download URL;
- Follow instructions to install the APP.



Google Play



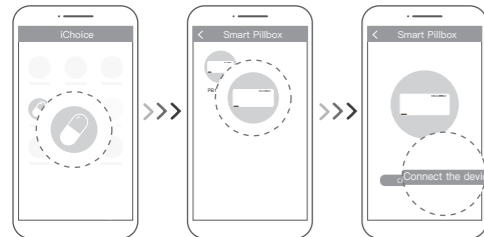
APP Store

2, Create user account

Launch the APP and follow steps to register an account.

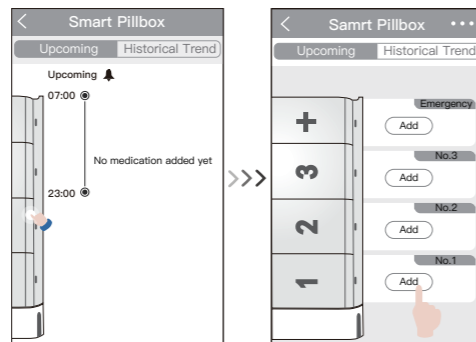
3, Add smart pillbox

Log into the APP. Then tap:
"Smart Pillbox" > "PB118/PB218" > "Connect the device"



4, Schedule medications

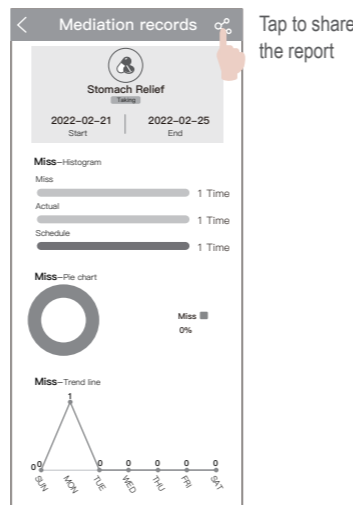
- Click the pillbox figure to reveal the hidden compartments;
- Tap "Add" button of one compartment;



- Enter pill name in this compartment and other details;
- Tap "FINISH" button at the bottom to save your schedule.
- Repeat these steps to add medications for another compartment.

5, View historical trend

- On the screen titled "Smart Pillbox", tap "historical trend" tab.
- Select a medication, you can view the medication records. (see the example below).



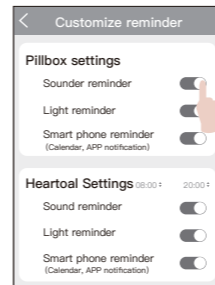
Tap to share the report

6, Settings

On the screen titled "Smart Pillbox", hit "•••" at the top-right corner to enter settings page.

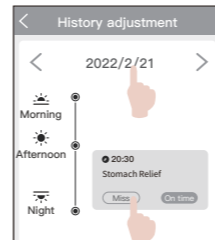
1. Customize reminder:

Enable or disable reminding from the pillbox or your phone.



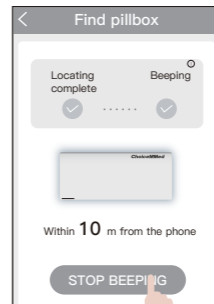
2. History adjustment:

Check your medication records on a specified day. Select "Miss" or "On time" to adjust the record.



3. Find pillbox:

Locate the pillbox (within the bluetooth range) to help you find it.
The box sounds intermittent beep and its indicator turns yellow when it is located successfully.
To silence the beep, tap "STOP BEEPING" or exit the page.



4. Instruction:

Read detailed use instructions of the APP.

5. FAQ:

Troubleshooting.

Limited Warranty

The main unit is guaranteed for one year against mechanical failure or faulty workmanship from purchase.

FCC Declaration

Please take attention that changes or modification not expressly approved by the party responsible for compliance could void the user's authority to operate the equipment.

This device complies with Part 15 of the FCC Rules. Operation is subject to the following two conditions:

- (1) This device may not cause harmful interference, and
- (2) This device must accept any interference received, including interference that may cause undesired operation.



Caution



Consult instructions for use



European union approval

Manufacturer:

Beijing Choice Electronic Technology Co., Ltd.
2nd Floor, 3rd Floor and Room 410-412 4th Floor,
No. 2 Building, No. 9 Shuangyuan Road, Shijingshan District,
100041 Beijing, PEOPLE'S REPUBLIC OF CHINA