

# CONTENT

- 1 **In the Box**
- 2 **Get to Know Eilik**
- 7 **Interact with Eilik**
- 11 **Games & Skills**
- 23 **One More Eilik, Way More Fun**
- 28 **Safety and Security**



Scan to Read  
English Manual



スキャンして日本語の  
説明書を読む

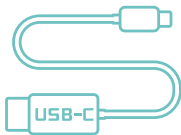
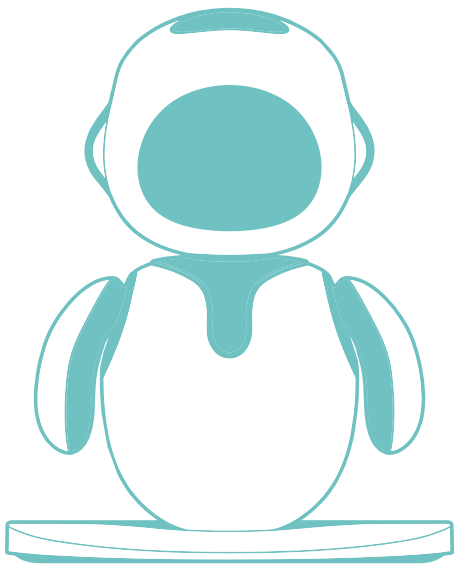


한국어 설명서를 읽으려면  
스캔하세요



扫码阅读中文  
说明书

# IN THE BOX

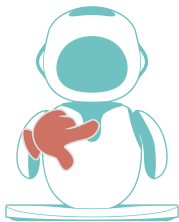
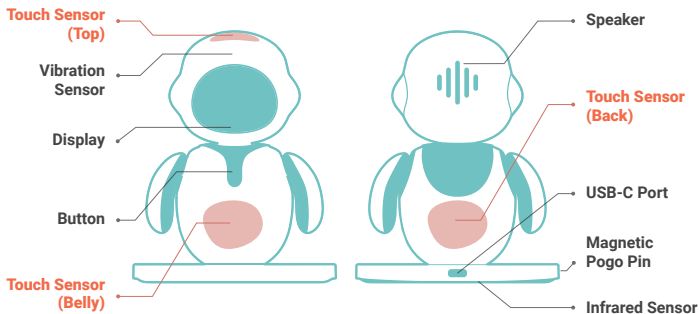


GET TO KNOW

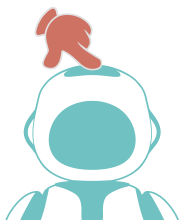
THE  
FILM  
EILIK

# 1. Get to Know Eilik

## 1.1 Body & Button



**Long press 3s+** to turn ON and OFF.  
**Short press** to switch functions.

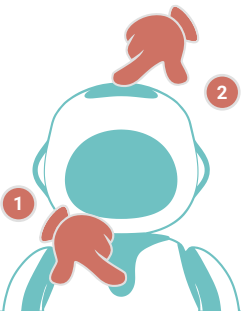


**Tap the head** to enter the selected function.

## 1.2 Functions

Press to switch functions

1



2

Tap to confirm



Heart Mode (Default)



Left or Right



Dance to Beat



Talking Toy



Monster Shooter



Fishing Game



Countdown Timer



Pomodoro Timer



Festivals



Puppet Toy



Settings



Eilik Theater



Crime Patrol



Dominoes



Song and Dance

Future updates will be available via Eilik software.

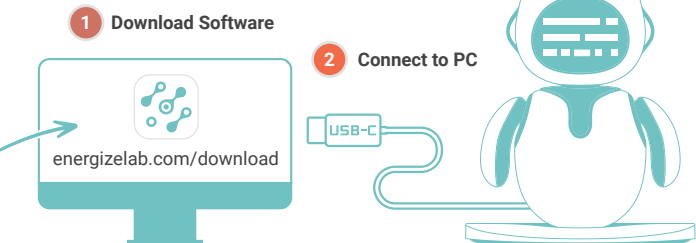
## 1.3 Charge

Touch the head to check the charging status.  
A charging time of 1-1.5 hours is good for Eilik.  
Charging **OVERNIGHT** is **HARMFUL**.



## 1.4 Update

Don't unplug the USB-C cable or move the robot when the update is in progress.  
If Eilik is bricked when updating, check page 6 for the solution.



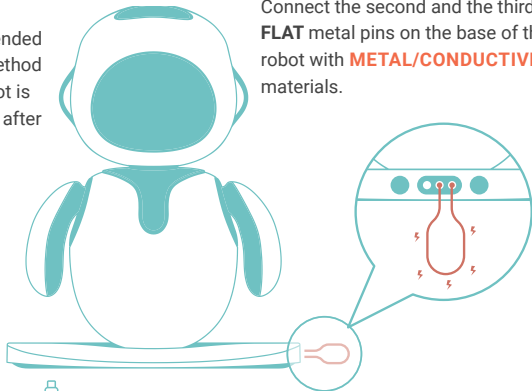
## 1.5 Reset

### Note:

It is recommended to use this method when the robot is unresponsive after an update.

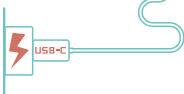
1

Connect the second and the third **FLAT** metal pins on the base of the robot with **METAL/CONDUCTIVE** materials.



2

Keep the short-circuiting state, and then plug the USB cable (which needs to be connected to the power supply) into the robot.



3

After resetting, a pop-up **ERROR** interface indicates that you can start the update again.

You need to fully format the storage card of the robot if the reset doesn't work. (Refer to page 29)

A top-down view of the robot's head. A teal speech bubble contains the following text:

**ERROR!**  
MISSING FIRMWARE  
PLEASE CONNECT USB  
TO UPDATE



The background is a solid teal color. It is decorated with several small, light teal icons: hands in various orientations (some pointing, some with motion lines) and four-pointed stars. The text is centered and rendered in a bold, white, blocky font with a slight shadow effect.

**INTERACT**

WITH

**EILIK**

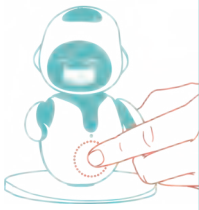
## 2. Interact with Eilik

### 2.1 Different Interactions

**Pet head**



**Tickle belly**



**Rub back**



**Hit head**

Try harder



**Slap table**

Try harder



**Take off the ground**

Then keep petting head to calm down (P28)



## 2.2 Heart Mode & Idle Mode



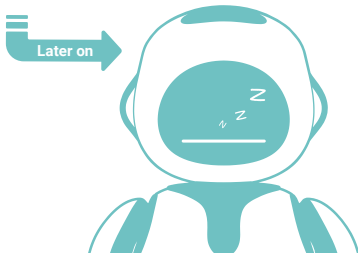
Heart Mode (Default)

Idle Mode

Sleep

Eilik enters Heart Mode (Interactive Mode) by default after startup.

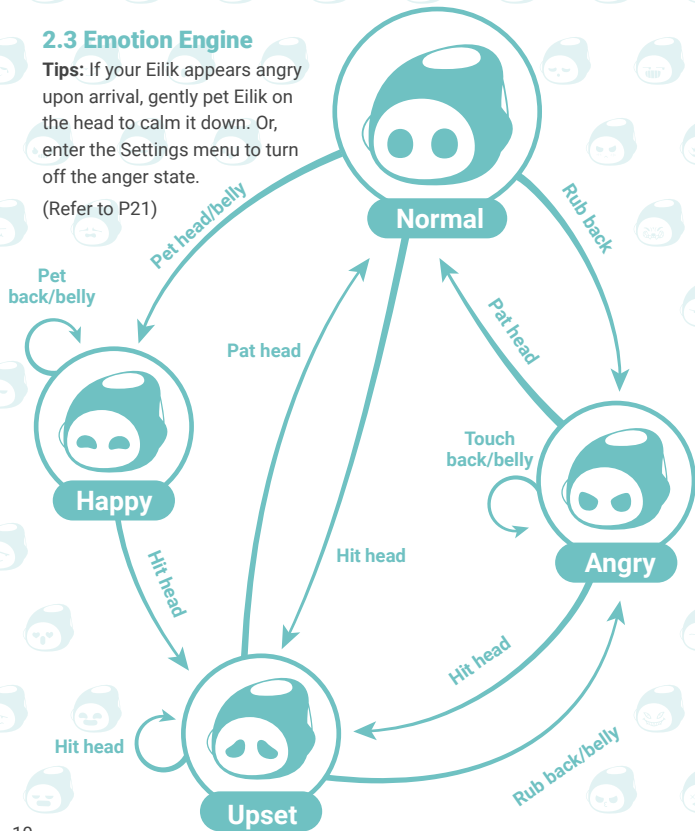
In the absence of interaction, Eilik will transition to Idle Mode, engage in self-amusement, and eventually enter a sleep state.



## 2.3 Emotion Engine

**Tips:** If your Eilik appears angry upon arrival, gently pet Eilik on the head to calm it down. Or, enter the Settings menu to turn off the anger state.

(Refer to P21)





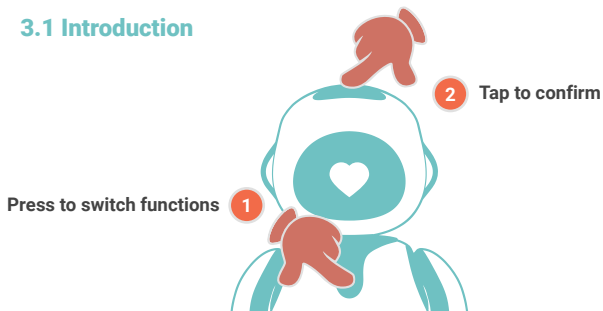
**GAMES**

&

**SKILLS**

# 3. Games & Skills

## 3.1 Introduction



Heart Mode (Default)



Left or Right



Dance to Beat



Talking Toy



Monster Shooter



Fishing Game



Countdown Timer



Pomodoro Timer



Festivals



Puppet Toy



Settings

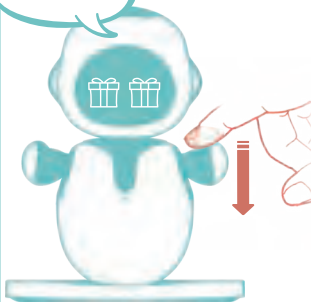
Future updates  
will be available  
via Eilik software.

### 3.2.1 Left or Right



1. Guess which hand

Left or right



2. Tap to try again

Wrong!



### 3.2.2 Dance to Beat



1. Create rhythms by clapping hands, a metronome or a speaker



Fast



Medium



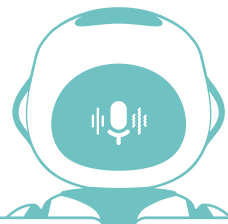
Slow

2. Eilik will listen to the beat and dance on different rhythms



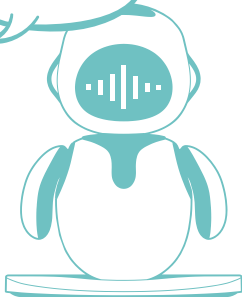


### 3.2.3 Talking Toy



#### 1. Recording

How do you do!

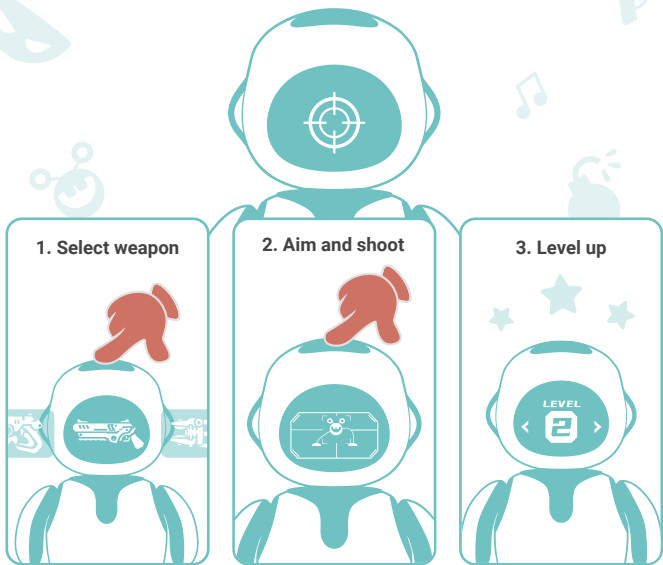


#### 2. Repeating

How do you do!



### 3.2.4 Monster Shooter



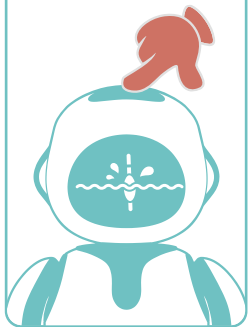
This is an intense and fast-paced shooter game to train your reaction. Choose from a wide range of awesome weapons, shoot at evil monsters and protect our base.

More weapons and challenges will be unlocked as you level up. Will you be able to make it to the end?

### 3.2.5 Fishing Game

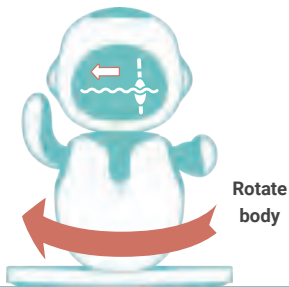
#### 1. Cast a fishing rod

Wait for a moving buoy  
(fish is hooked)



#### 2. Quickly turn Eilik's body in the arrow direction on the screen

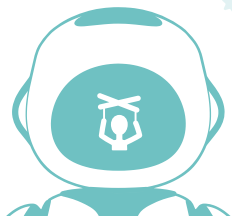
Keep the buoy in the middle until  
the fish is exhausted



If the buoy swings violently, the fish will be off the hook.

Ask **THE OLD MAN** how to fish a giant marlin.

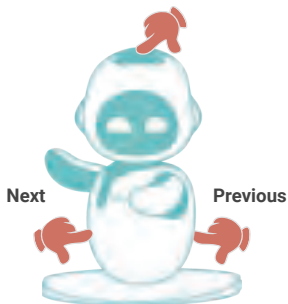
### 3.3.1 Puppet Toy



1. Rotate the head or hands to pose



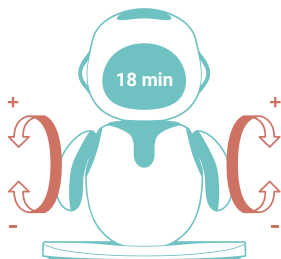
2. Tap the head to switch expression groups



### 3.3.2 Countdown Timer

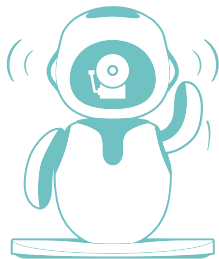


1. Rotate hands to set time



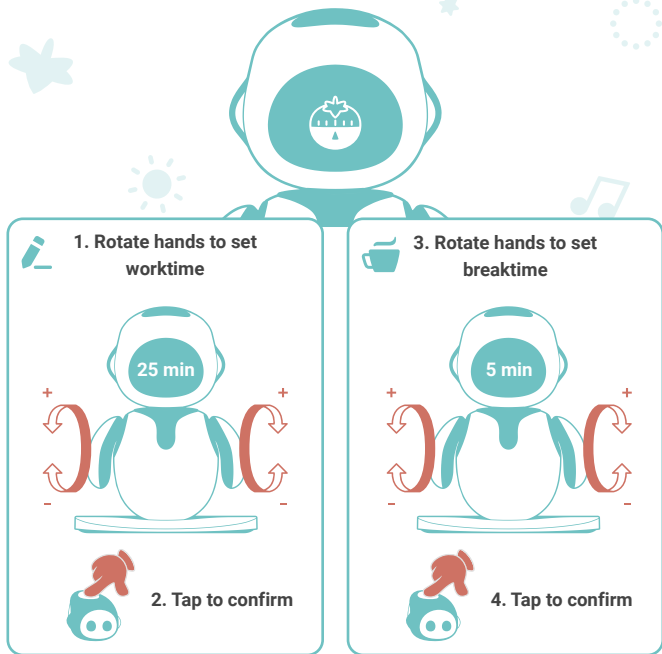
2. Tap to confirm

3. A bell ringing, time's up



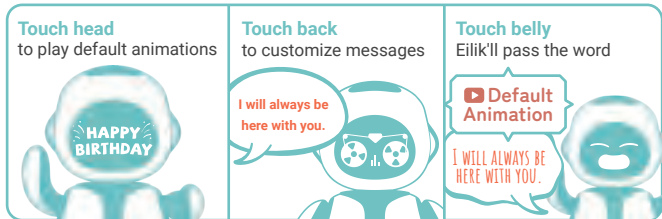
4. Tap to stop

### 3.3.3 Pomodoro Timer



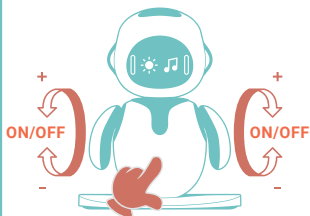
There will be a prompt sound to remind you of the time. You can also touch the head to check the time.

### 3.3.4 Festivals



### 3.3.5 Settings

1. Rotate hands to adjust the relative settings.



2. Tap BELLY to switch the settings interface.



3. Tap head to confirm settings.

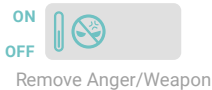
#### Settings Interface



Brightness & volume



Sensitivity to height & quake



Remove Anger/Weapon

In Settings, tap Eilik's back to display the ID number.

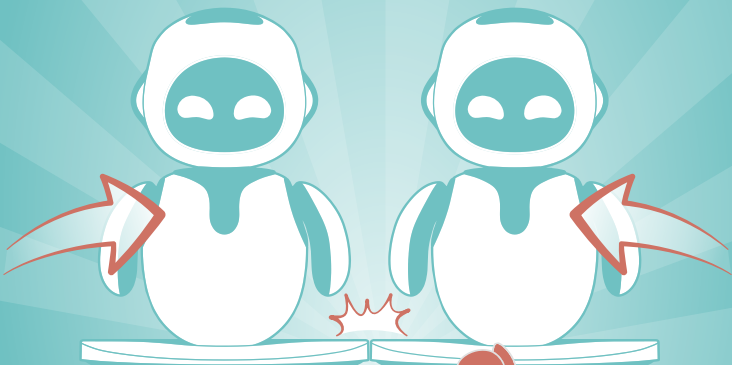
ID number

KSDMGR-000000001



# ONE MORE EILIK WAY MORE FUN

---



Snap!

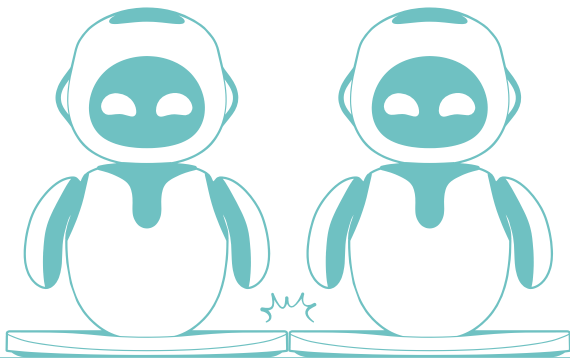
1. Press any control button to switch functions.



2. Tap any Eilik's head to start or confirm.



## 4.1 Eilik Duo



Eilik Theater



Crime Patrol



Dance to Beat

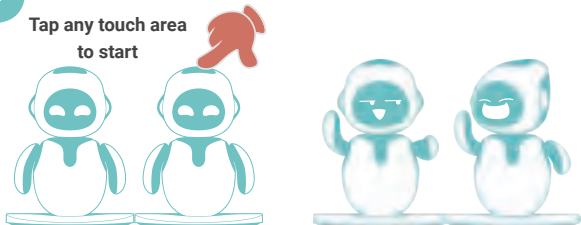


Puppet Toys



## Eilik Theater

Tap any touch area  
to start



## Crime Patrol

Tap to disarm criminals  
within a limited time

**Note:** Avoid the  
distraction props like,  
bomb, candy cane, etc.



## Dance to Beat

Refer to page 14



## Puppet Toy

Refer to page 18

## 4.2 Eilik Party



Dominoes



Song and Dance



Crime Patrol



Dance to Beat



Puppet Toys



## Dominoes

Tap any touch area  
to change moves



Try another move

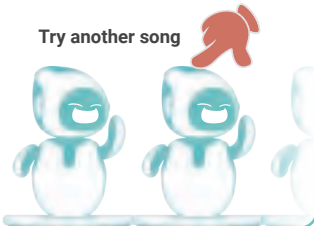


## Song and Dance

Tap any touch area  
to change dance



Try another song



## Crime Patrol

Refer to page 25



## Dance to Beat

Refer to page 14



## Puppet Toy

Refer to page 18

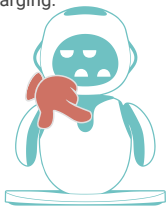
More games are coming...

# 5. Safety & Security

## 5.1 Precautions

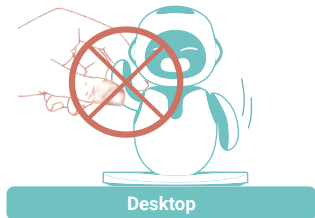
### 5.1.1 Stuck

If Eilik is **STUCK** or frozen after booting, hold down the button for **15 seconds** to restart. Don't restart Eilik while charging.



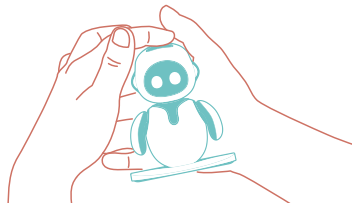
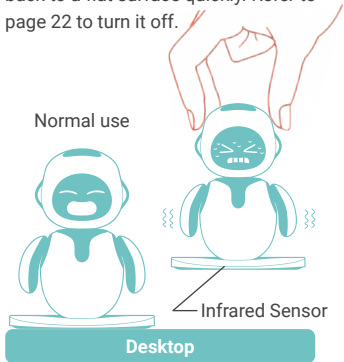
### 5.1.2 Avoid Injuries

To avoid potential injuries, don't grab at Eilik's hand when he is moving, or put your finger under his armpit!



### 5.1.3 Hover Detection

Eilik is afraid of high places. There is an infrared sensor at his bottom, Eilik will be scared and even cry when Eilik is off the ground. The only way to comfort Eilik is to hold the back and fondle the head gently, or put Eilik back to a flat surface quickly. Refer to page 22 to turn it off.





### 5.1.4 Format the SD card

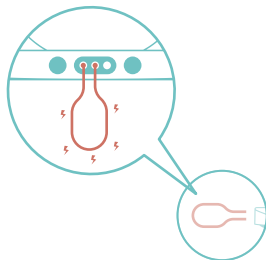
This method is to **COMPLETELY FORMAT** the SD card.

All the contents of the SD card will be **ELIMINATED**.

Please operate with caution.

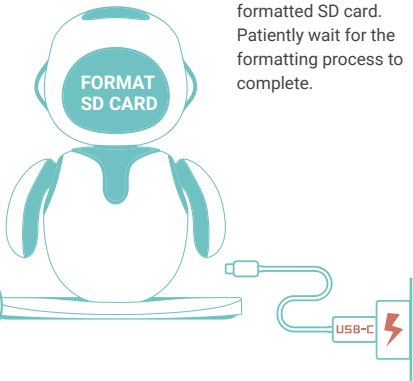
1

Use a **METAL WIRE** to short circuit the first and the second **PROTRUDING** pins on the left side of the base.



2

Plug a USB cable into Eilik. There will be a prompt of fully-formatted SD card. Patiently wait for the formatting process to complete.



3

Connect Eilik into the computer. Start the software to update and repair the firmware (The process takes a relatively long time).

## 5.2 Security Instructions

**Improper use of the product can easily cause damage to the product or may endanger personal and property safety.**

**Please keep and use this product in strict accordance with the following safety instructions:**

1. This product cannot be washed.
2. Be sure to use the local safety standard charger for this product to charge, to prevent electric shock or battery damage.
3. Serious fall and intense physical actions including stressing, throwing, trampling and squeezing, etc. shall be avoided.
4. Be sure to there is no liquid infiltration/splashing into the product to avoid battery, circuit damage or short-circuit.
5. Disassembly or disintegration of this product by non-professionals is strictly prohibited.
6. It is strictly prohibited to put this product into harsh environments such as water, fire (including close to stove, heating and other heat sources) or exposure to temperatures above 60°C (140°F).
7. When the weather is hot, please

do not put this product in the outside unmanned car or other sun exposure places.

8. If you don't use this product for a long time, please store it in a cool and dry environment.
9. This product contains lithiumion batteries. It is strictly prohibited to open the product's shell to avoid possible damage to the core or other hazards.
10. Please full charge this product when it's used for the first time.
11. When charging the product, you should ensure your presence, unplug the power when you leave or go out for a long time.
12. When this product is fully-charged, please remove the connection cable in time, to avoid damaging battery capacity.
13. High brightness or prolonged charging will damage Eilik's OLED screen, and even result in screen burn-in. Please keep the brightness in an appropriate range. Unplug the USB-C cable when Eilik is fully charged.



## 5.3 Warranty Policy

**Energize Lab provides a 90-day Warranty Policy. The specific warranty services are as follows:**

1. During the Limited Warranty period, Energize Lab will repair or replace any parts of the Product that are defective or malfunction during normal usage. Energize Lab reserves the right to use new or refurbished replacement parts in repair of the Product.
2. A purchase receipt or other proof of the date of purchase is required in order to claim the benefit of this warranty.
3. This limited warranty applies only to products manufactured by or for Energize Lab and that can be identified by Energize Lab's trademark, trade name or logo. The limited warranty does not apply to any non-Energize Lab product or software.
4. The Limited Warranty extends only to Purchasers who purchased the Product on official channels and is not assignable or transferable to any subsequent purchaser.
5. Notwithstanding the foregoing terms of this warranty, Energize Lab reserves the right at all times, at its sole option and discretion, to refund to you the purchase price paid by you for this

Product in full and final settlement of Energize Lab's obligations under this warranty.

**Energize Lab will not provide warranty services in the following circumstances:**

1. Improper storage, misuse, collision, negligence, abuse, exposure to liquid, infusion, moisture, accident, incorrect use of parts other than the product;
2. External causes and force majeure such as fire, flooding, sand, dirt, windstorm, lightning, or earthquake;
3. Exposure to extreme weather conditions, theft, loss, or improper use of any electrical source;
4. Improper testing, operation, maintenance, installation, or any alteration or modification of Product;
5. Cosmetic damage, including but not limited to scratches, dents or broken plastic, or normal wear and tear;
6. Usage of product other than its normal and customary manner;
7. The term of validity has exceeded 90 days.

## 5.4 Regulator Compliance



### FCC Compliance Statement

This device has been tested and found to comply with the limits for a Class B digital device, pursuant to Part 15 of the FCC Rules. These limits are designed to provide reasonable protection against harmful interference in a residential installation. This equipment generates, uses and can radiate radio frequency energy and, if not installed and used in accordance with the instructions, may cause harmful interference to radio communications.

However, there is no guarantee that interference will not occur in a particular installation. If this equipment does cause harmful interference to radio or television reception, which can be determined by turning the equipment off and on, the user is encouraged to try to correct the interference by one or more of the following measures:

- Reorient or relocate the receiving antenna.
- Increase the separation between the equipment and receiver.
- Connect the equipment into an outlet

on a circuit different from that to which the receiver is connected.

- Consult the dealer or an experienced radio/TV technician for help.

This device complies with Part 15 of the FCC Rules. Operation is subject to the following two conditions:

- (1) this device may not cause harmful interference, and
- (2) this device must accept any interference received, including interference that may cause undesired operation.

**Caution:** changes or modifications not expressly approved by the party responsible for compliance could void the user's authority to operate the equipment.



### EU WEEE Statement

The symbol means that this product shall be disposed of separately from household waste according to local laws and regulations in the EU. When this product reaches its end of life, take it to a collection point designated by local authorities for the recycling of waste electrical and electronic equipment. The separate collection and recycling of your product at the time of disposal will help conserve natural resources and ensure that it is recycled in a manner that protects human health and the environment.



### UK Declaration of Conformity

Shenzhen Zhuneng Technology Co., Ltd. hereby declares that this device is in compliance with the essential requirements and other relevant provisions of Toy (Safety) Regulations 2011 and Electromagnetic Compatibility Regulations 2016.



### EU Declaration of Conformity

Shenzhen Zhuneng Technology Co., Ltd. hereby declares that this device is in compliance with the essential requirements and other relevant provisions of Directive 2014/30/EU.



### PSE Certification

Shenzhen Zhuneng Technology Co., Ltd. hereby declares that this device is in compliance with the essential requirements and other relevant provisions of Ministerial Ordinance For Determining Technical Standards For Electrical Appliances.

Tag #Eilik on social media to tell your stories with Eilik.

Seize the chance to win special rewards:D

TO LEARN MORE VISIT: [energizelab.com](http://energizelab.com)

NEED SOME SUPPORT VISIT: [energizelab.com/support](http://energizelab.com/support)

JOIN OUR COMMUNITY:



 Facebook

 Youtube

---

Designed by Energize Lab, assembled in China.

Copyright © 2023 Shenzhen Zhuneng Technology Co., Ltd. All rights reserved.  
Energize Lab and Eilik are trademarks of Shenzhen Zhuneng Technology Co., Ltd.