

Windows Setup

Note Do not insert the applications disc yet. You will need to pair the device successfully first.

1 Turn on the headset. The blue LED will turn on. **You can pair the device at anytime.**

2 For **WINDOWS 10:**

a Click **Settings** **b** Click **Devices** **c** Click **Bluetooth**

d Select **MindWave Mobile** and click **Pair**. If you see multiple devices named **MindWave Mobile**,     **e** If it requires a pass key, please enter **0000**

For **WINDOWS 8 & 8.1:**

a Click **Settings, Control Panel** then **b** Click **Add Device** **c** Select **MindWave Mobile** and click **Next**

d It may take several minutes to install necessary files on your system **e** If it requires a pass key, please enter **0000**

For **WINDOWS 7:**

a Click **Start**, then **Control Panel** **b** Click **Add Device** **c** Select **MindWave Mobile** click **Next**

d Click **Close** to complete pairing **e** If it requires a pass key, please enter **0000**

For **WINDOWS XP:**

a Click **Start**, then **Control Panel** **b** Click **Bluetooth Devices** **c** Select **Devices** click **Add**


d Check **"My device is setup and ready to be found"** **e** Select **MindWave Mobile** and click **Next** **f** Select **"Let me choose my own passkey"**, enter **0000**

g Click **Finish** to complete pairing

3 Once the headset is paired, visit mindwavemobile.neurosky.com/tutorial. QR code on page one.

4 Follow the on-screen guide to download, install and run the **"MindWave Mobile+ Tutorial"** app to further configure your headset.

5 You may now insert the application disc and install your apps. If you don't have a disc drive you can download your apps from mindwavemobileplus.neurosky.com. QR code on page one.

 **Travel Note for ALL PLATFORMS** *MindWave Mobile is sensitive to different electrical standards used in other countries. If you travel to another country, visit mindwavemobile.neurosky.com/tutorial to reconfigure.*

Quick Start Guide

mindwave
MOBILE



View the MindWave Mobile+ Tutorial and configuration tools here:
mindwavemobile.neurosky.com/tutorial

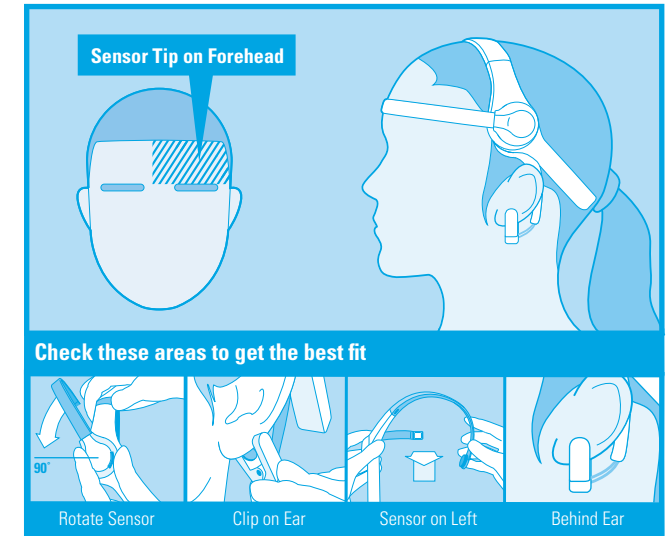
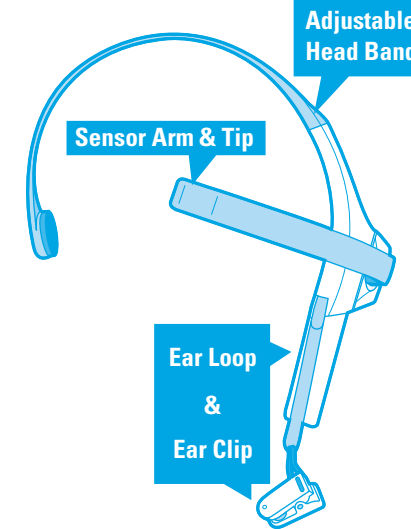


If you don't have a disc drive, you can download the disc contents here:
mindwavemobileplus.neurosky.com

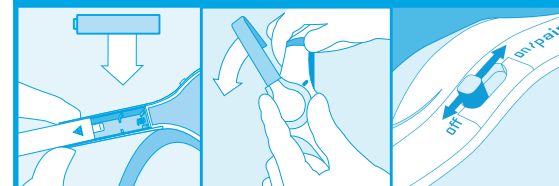
MindWave Mobile Headset Basics

How to Wear the MindWave Headset The headset should rest on the head as shown with the sensor tip touching the forehead, the ear loop behind the ear and the clip attached.

The Headset



Before You Start



Insert One (1)
AAA Battery

Rotate the Sensor
Arm Down

Power Located Here

off  on / pair off  on / pair

Headset will be **OFF**
The LED will be **OFF**



LED

Headset will be **ON**

When the headset is powered on the LED will **light up blue**.

You can pair the headset at any time while it is powered on.

Attention: Turning On, switch the On/Off button only once. Pairing will be activated automatically.