



# MINDMESH

# What is MindMesh?



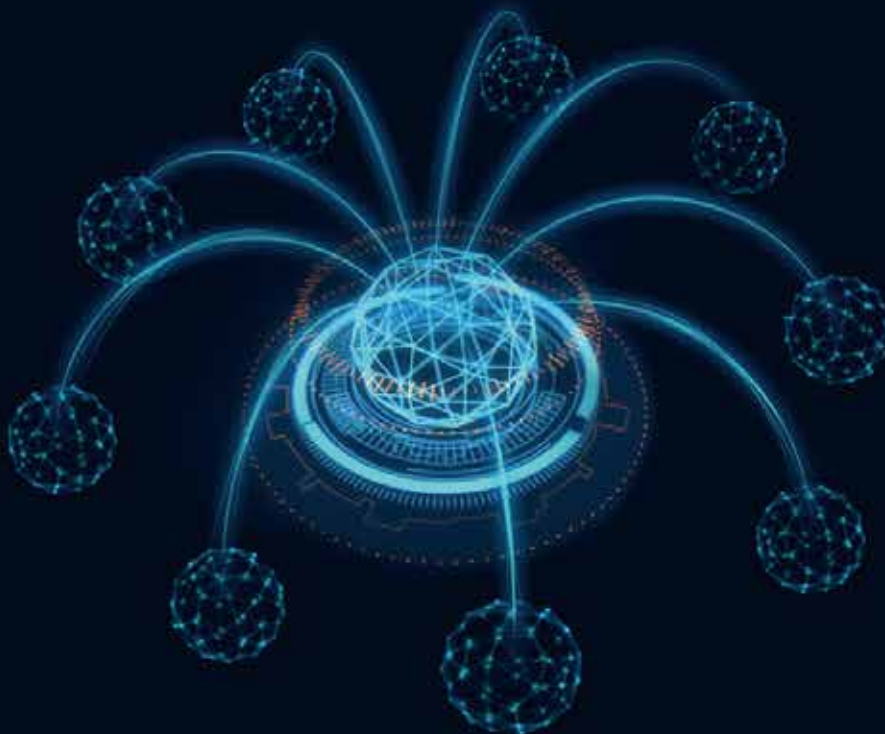
MindMesh is a simultaneous multi-person EEG acquisition system, consisting of a front-end acquisition system (software) as well as MindMesh EEG sensors and a Bluetooth gateway (hardware). By wearing MindMesh EEG sensors and connected to the MindMesh acquisition system, it is possible to collect the EEG data of up to 50 people simultaneously, display the data on the front end of the acquisition system, and provide specific and detailed EEG information analysis reports for groups and individuals.

## Hardware



## Software

As a set of multi-person EEG acquisition system, MindMesh achieved multi-person EEG signal acquisition simultaneously, while providing users with a set of multi-person EEG acquisition framework standard, which solved the current problems of most consumer EEG products, such as which only support individual EEG acquisition, high cost and complex use in multi-person EEG acquisition.



# Developing History

2010-8



Macrotellect founded officially



BrainLink Pro  
launched for sale

2014-6


2015-1



BrainLink Lite  
crowdfunding successfully

2018-6

2019-12

  
Developed more than 20  
applications related to EEG

**MINDMESH**  
MindMesh project started

**MINDMESH**  
MindMesh launched

2020-7

# How does it work?

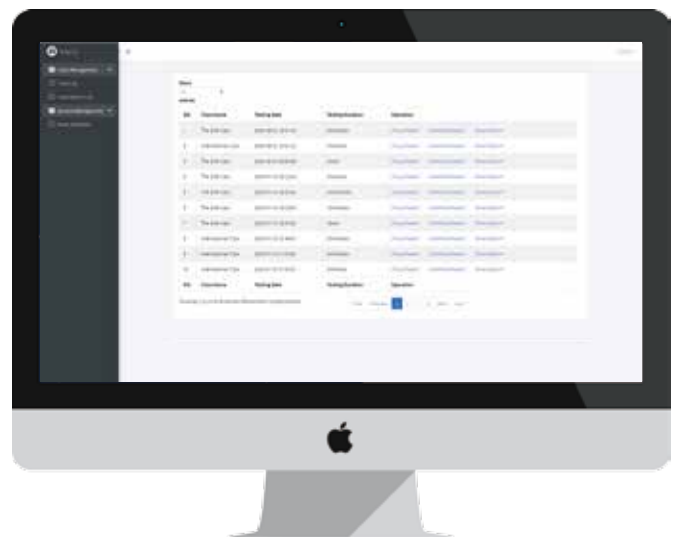


# What kind of data can MindMesh provide?



Through the connection to the MindMesh EEG sensors via Bluetooth, the front end of the acquisition system displays group attention, group relaxation, and group flow, as well as individual attention, individual relaxation, and individual flow data for each user simultaneously. The rankings and trends of the data during the acquisition process are also displayed in a real time in the system.

After the acquisition, the system will automatically generate group and individual EEG data analysis reports for users in the back-end, recording the changes in the EEG acquisition process and the evaluation criteria of the data in detail: Excellent, Good, Normal and Stability changes, providing more accurate reference for users in the multi-person EEG acquisition.



# Target Users

MindMesh is a ToB solution aimed to clients who need to track and collect multi-person EEG data simultaneously, which apply to Neurofeedback training, Employee Training, Neuromarketing, Meditation, Education, and other applications that require attention, relaxation, and other brain values of multiple person.

**Neurofeedback  
training**

**Neuromarketing**

**Meditation**

**Education**



# How MindMesh Benefits Our Life?

Education, Employee training, Team building, Group psychological assessment, Research projects

By using MindMesh to collect and analyze multiple people's EEG data simultaneously, it is possible to track the real-time status of group and individual brains. In team projects, the analysis of group data can be more effective in obtaining real-time mental states and overall feedback from team members. In terms of personal biological data acquisition, EEG data analysis can also be used to achieve more accurate neurofeedback training, and in the process of continuous improvement to improve personal attention and other psychological indicators.





# Business Case



## Education & Training

By using MindMesh system, teachers of education or training institutions collect real-time attention data feedback from multiple students in the classroom to verify the effectiveness of the improvement in teaching methods and effectively improve the teaching quality.



## Team Building Activity

Using MindMesh EEG sensors to collect EEG data from team members during team building activities, and observing the flow trend data of team members during group activities to optimize team management and improve the overall cohesion and effectiveness of teamwork.