



+tucky

Remote temperature
monitoring of critical
patients

-

In & out hospital cares

Need for temperature monitoring inside hospital

Intensive cares



- Fever peak: best time for blood cultures
- Temperature: symptom of septic shock

Recovery room



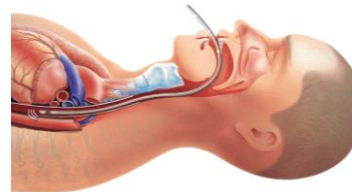
- End of hypothermia (caused by anaesthesia): criteria for waking up the patient

Heavy treatments (car-t cells)



- Treatment must be done without fever
- Only few hours to treat infections

Current solution:



Oesophageal or bladder catheters
(very **invasive**)



Need for a continuous "non-invasive" measurement solution

Need for temperature monitoring outside hospital

Treatment of critical diseases at home



CANCER
(ORAL CHEMO)



RENAL FAILURE



TRANSPLANT

Weak immune system

(low white blood cell level)



High risk of infection

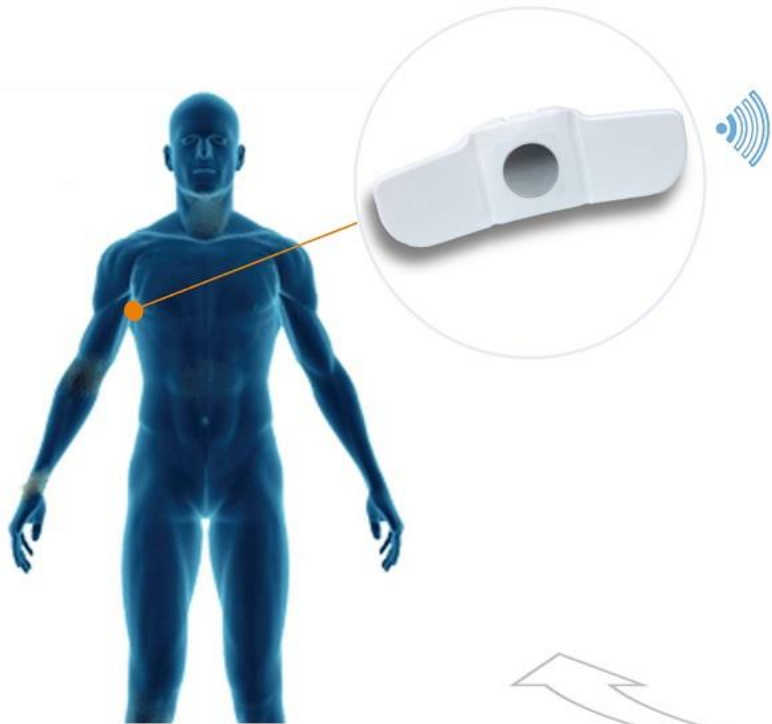
But little follow-up organization(short nurses visits)



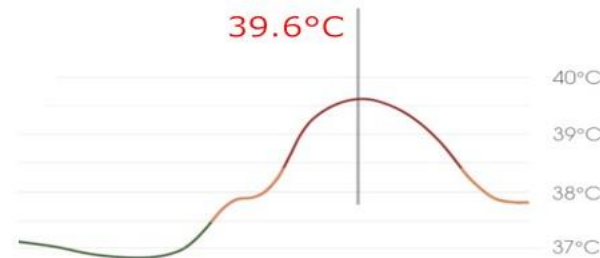
Need for a remote doctor alert solution

Solution: wearable monitoring

Axillary patch



Real-time fever tracking



Remote doctor alert



Early detection of infectious → Quick start of the treatment

Tucky thermometer



Certified & accurate
medical device class IIA



Thin and flexible patch
Biocompatible materials



Continuous
measurements of axillary
temperature



Optimal Bluetooth range
(patented)



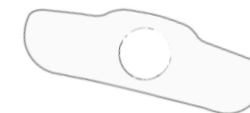
Posture monitoring



Secured data



Reusable (rechargeable +
cleanable)



Comfortable fixation
(double-sided adhesive)

Global solution



Gateway & Tucky Center



Bluetooth / Wifi gateway for Tucky
Up to 4 Tucky simultaneously
Remote configuration via TuckyCenter



Real time data
(temperature & position)

Alerts
(visual, sound, mail...)

Gateway management &
association Tucky / Patients



Economic SAAS solution
Accessible everywhere
Multi media display
Nothing to install
No maintenance
High security level